

ARTREACH



**ARTIST CREATION
PROJECT GRANT
GUIDELINES**

2024

This grant supports the creation of art projects by emerging artists aged 16-29 from equity-deserving populations in Toronto.

ARTREACH RUNS ONE GRANTING ROUND FOR THIS PROGRAM ANNUALLY:

APPLICATIONS OPEN SEPTEMBER 1ST AND ARE DUE OCTOBER 1ST AT 11:59PM EACH YEAR

THIS GRANT WAS CREATED BY OUR FRIENDS



2024 TIMELINE

GRANT
OPENS

SEPTEMBER
1ST

INFO
SESSIONS

SEPTEMBER
4TH

INFO
SESSIONS

SEPTEMBER
18TH

GRANT
CLOSES

OCTOBER
1ST

RESULTS
OUT

NOVEMBER
18TH

FUNDS
OUT

DECEMBER
13TH

REPORT
DUE

MAY
31ST

1-1 SUPPORTS AVAILABLE

CREATION

ELIGIBILITY

THIS GRANT FUNDS PROJECTS...

- Delivered by individual artists or a group of artists aged 16-29 from equity-deserving communities. If applying as a group, one artist must be responsible for acting as the project lead and be accountable for funds
- Focused on the creation of new artistic works
- That can be executed in 4 months with a budget of up to \$1,000
- Executed by artists based in Toronto (this includes **only** the City of Toronto, Scarborough, North York, and Etobicoke)
- By artists who have not received funding from the Toronto Arts Council, Ontario Arts Council, Canada Council for the Arts, or any other substantial arts funding for their practice
- Led by artists working in any artistic discipline
- Led by artists with a track record of finishing projects and following through on goals

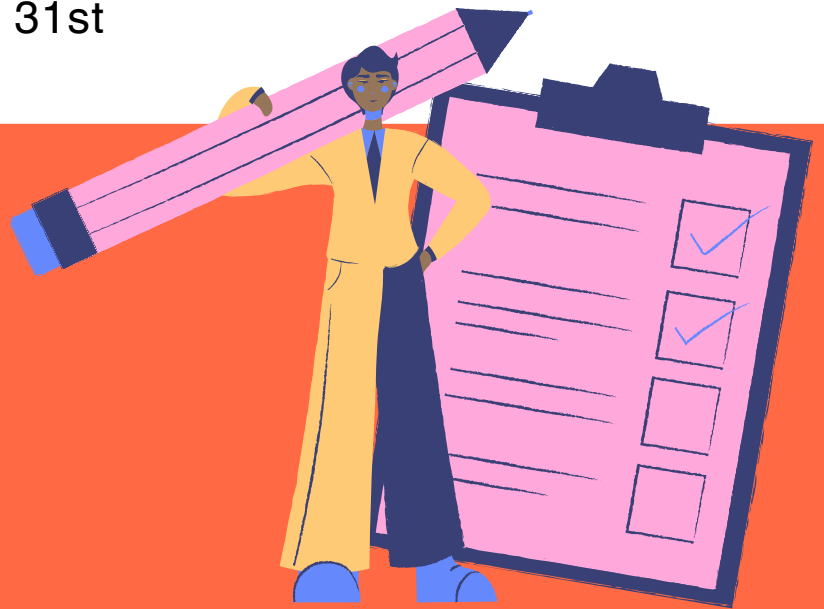
THIS GRANT DOESN'T FUND...

- Workshops and events
- Promotion, merchandise, duplication
- Professional development
- Parts of projects (must be a complete arts project)

RULES

GENERAL RULES

- Applicants can receive a maximum of 2 Artist Creation Project grants. Because this grant is a continuation of CUE's artist grant, this means that grants issued by either ArtReach or CUE count towards this total
- Grantees must complete their current ArtReach-funded projects and submit their final reports before re-applying for funding
- Work on projects cannot start before your grant payment is received
- Applicants may receive less than the amount requested
- Applicants may only submit one application to this granting program per funding round.
- Grant Review Team members cannot apply to the round of funding they're adjudicating
- Projects should be completed by April 30th, and grantees should submit a final report by May 31st



MONEY MATTERS

HOW MUCH CAN I APPLY FOR?

You can apply for a maximum of \$1,000

WHAT CAN I SPEND GRANT FUNDS ON?

Only expenses directly related to the project you're applying for can be included in your funding request. If there are other expenses not included in the list below that are critical to the success of your project, please email us at grants@artreach.org

ELIGIBLE EXPENSES

- Artist fees
- Art supplies
- Equipment rental costs
- Transportation costs (for transporting supplies/ equipment)
- Basic quality finishing
- Capital purchases
- Workspace rental costs
- Software necessary to the project

INELIGIBLE EXPENSES

- Retroactive expense coverage
- Costs not directly related to the project being applied for
- Substantial capital or infrastructure costs
- Promotion, merchandise and duplication

FUNDING DECISIONS

If your application is eligible, ArtReach's Grant Review Team (GRT) will review your application and funding request

Applications are reviewed based on:
ARTISTIC MERIT + PROJECT VIABILITY

The GRT is a group of qualified artists from across Toronto experienced in a wide variety of artistic disciplines. All GRT members are former grantees

You will receive an email with the results on the success of your application approximately 6 weeks after the deadline

ALL FUNDING DECISIONS ARE FINAL

If your program is not approved for funding, you can feedback via email on why your application was declined, and if applicable, a recommendation for next steps



BEING A GRANTEE

ARTREACH EXPECTS THEIR GRANTEES TO...

- Provide your SIN number to ArtReach for tax purposes
- Stay in contact with us throughout the production process
- Document their progress through whatever means works best for you (EG. photo, video, voice notes, journaling, sketches, etc.)
- Keep all expense receipts and submit, if requested
- Acknowledge ArtReach funding support (where applicable)
- Complete the project by the April 30th deadline
- Submit final documentation on the project
- Complete a short report at the end of the project
- Sign a contract agreeing to these terms



HOW TO APPLY

THIS GRANTING PROGRAM OPENS ANNUALLY ON SEPTEMBER 1ST, AND APPLICATIONS ARE DUE OCTOBER 1ST AT 11:59 PM

WE DO NOT ACCEPT LATE SUBMISSIONS

To submit an application:

- Head to artreach.org/projectgrant
- Check out our application questions
- Draft your responses
- Apply through the button on our website (being sure to upload your supplementary material)

ACCESSIBILITY

We understand that not everyone will find our application form or process accessible.

If you require any support in completing your application package, or would like to submit in an alternative format, please contact grants@artreach.org